

Explore the River Parrett Trail

The
River
Parrett
Trail

from
Source
to Sea



Discover 50 miles of beautiful
scenery, enchanting wildlife and
moments of tranquil reflection.



www.visitsouthsomerset.com



The River Parrett Trail

Section 1: Chedington to Merriott

Overview

The start is 600 feet above sea level at Thorney Mill Springs and the route drops down through fields to South Perrott. It then rolls across the countryside following the Parrett where possible and passing through the hamstone villages of South Perrott, North Perrott and Merriott.

Waterproof boots are advisable as much of this first section is through fields close to the river; in particular, the fields between the start and South Perrott are wet as there are many springs in this area. The route is primarily level. There may be livestock in the fields, so please keep dogs on leads.

This section crosses four 'A' roads where extreme care should be taken and the main line South Western Railway line.

Length of Walk: 6.75 miles

OS Explorer Maps: 116 Lyme Regis & Bridport and 129 Yeovil & Sherborne



Parking: Winyard's Gap Pub, Chedington, please ask permission of the landlord. Roadside parking in Merriott. Please park sensibly to prevent congestion.



Travel and Transport: Visit www.travelsomerset.co.uk or www.travelinesw.com for help in planning your logistics.



Toilets: Limited, except for local pubs and cafés.



Places to Eat and Drink: There are pubs in Chedington, South Perrott, North Perrott and Merriott. Shops and cafés in North Perrott and Merriott.



Look out for: Wild flowers in the spring, including native *Fritillaria meleagris* or Snake's Head fritillary, and evidence of ancient leats and mills, particularly around North Perrott.

Haselbury Mill has a large Tithe Mill – is this original or a realistic replica?



While in the Area: Allow time to visit Crewkerne with bustling cafes and independent shops, especially the Crewkerne & District Museum & Heritage Centre with fascinating displays of life in the area. Pick up a leaflet from the Information Centre about The Crewkerne Antique Trail.

The River Parrett Trail



U.S. GOVERNMENT PRINTING OFFICE: 1977 O - 302-323

Disclaimer - The Public Rights of Way shown on the map are only intended as an indication of the general route. To determine the exact route of a Public Right of Way, the Definitive Map (1:10560 scale) should be consulted.

The River Parrett Trail

Section 1: Chedington to Merriott (page 1)

1. ST 491 062 CHEDINGTON

With the Winyard's Gap Pub behind you, turn left along the road towards Chedington to reach signed footpath on **R**. Go through gate, head diagonally **L** then bear **R** to follow marker posts. Go straight across next two fields. In next field bear to **R** of three large trees and aim for gate in bottom **R** hand corner.

2. ST 483 063

Follow **R** hand edge of next two fields, with start of river on your **R**. At end of second field go through gate and turn **R**, signed to South Perrott, and then after 30m go into next field and bear **L**, aiming for gate halfway along fence on **L**. Go through two gates and keep to **L** hand edge of next field (seating area on **R**) to gate in **L** hand corner of field. Continue ahead to cross bridge over river to another gate opposite to reach a lane.

The lane continues along the riverbed, so it is advisable to take signed permissive path through gate on **L** and go along **R** hand edge of field to re-join the lane via a pedestrian gate. Continue along the lane to reach a road and turn **R** and then immediately **L** on signed path to reach gate into South Perrott churchyard.

3. ST 478 067 SOUTH PERROTT

Leave churchyard by main iron gateway and walk down road to reach main road (A356). Go **R** along footpath for 110m passing pub then cross road with care to go along Pipplepen Lane and follow 850m to Pipplepen Farm.

4. ST 473 076 PIPPLEPEN FARM

Continue on road passing the farm on your **R**. After 150m where road bends **L** go straight ahead on footpath aiming for pylon ahead. At end of field pass through kissing gate, footbridge and kissing gate. Follow **R** hand edge of next field ascending gently and then bearing slightly **L** to railway crossing.

5. ST 473 083

Cross railway with care and go straight ahead in next field aiming for electricity pole and **R** of group of trees ahead. On reaching trees bear slightly **R** to locate kissing gate in **R** hand boundary. Cross two bridges and go through second kissing gate into field. Bear **L** in aiming for gate in far **L** hand side (it may be easier to go clockwise round field keeping hedge on **L**). Go through wooded area to reach a waymarked gate. Go straight ahead 90m to reach trough, then go 90 degrees **R** uphill for 150m aiming for **L** end of hedge then ahead 120m towards a house to reach a metal gate in top **R** hand corner. Go through and walk to **R** of cottages 100m to reach road. Turn **L**, walk along road 350m to junction with main road. Turn **R** along road for 100m passing pub on **R**, to reach village green in North Perrott.

6. ST 475 095 NORTH PERROTT

Turn **L** at village green and walk along road 250m to reach church on **R**. Continue past church and just past Manor Farm Drive go **R** through kissing gate and cross field downhill on well-defined path to reach a kissing gate on to a surfaced road.

The River Parrett Trail

Section 1: Chedington to Merriott (page 2)

7. ST 469 098

Turn **L** along road, pass school on **L** and continue straight ahead on path signed to Crewkerne. On reaching gate bear **R** to go through kissing gate. Walk down narrow enclosed path through woods to reach a further gate. Go **R** and continue downhill on wider farm track to reach gate. Cross and bear slightly **L**, just to **R** of group of trees, and where trees end turn **L** towards a metal gate close to the River Parrett. Go through gate and walk upstream with river on **R** and old mill ruins on **L** until you reach a bridge.

8. ST 461 098

Cross the river, pass through kissing gate, and turn sharp **R** to walk downstream with river on **R**. Keep along the river bank for 1.5Km (beware - even after dry weather there are boggy patches which should be crossed with care) passing through several kissing gates, until you reach footbridge on **R**. Cross and go across field, with river now on **L**, to reach squeeze stile to **R** of road bridge. Go up steps to reach very busy main road (A30). Cross with extreme care to steps directly opposite on path signed to Merriott. Follow track to **R** hand corner of field to a squeeze stile onto road opposite Haselbury Mill.

9. ST 459 110 HASELBURY MILL

Turn **R** on road and immediately **L** through squeeze stile signed to Merriott. Walk along **L** hand edge of field through another squeeze stile past fingerpost and, where hedge line ends, bear **L** with hedge to squeeze stile in far **L** hand corner.

Keep to **L** hand edge of next field to footbridge across River Parrett.

10. ST 459 115

Cross bridge and head initially straight ahead and then bear **R** on well-defined path to footbridge and kissing gate ahead. Continue in same direction across next two fields passing through kissing gates. In next field go straight across, 15m in from **R** hand edge, to reach a footbridge and gate in far hedge. Keep to **R** hand edge of next fields crossing kissing gates before reaching enclosed grassy path to kissing gate onto main road (A356).

11. ST 451 121

Cross main road with care, go **L** for 30m and then **R** on tarmac road. Continue for 660m along this road passing mill on **R** to reach the end at a T junction in Merriott. Turn **R** on road, and after 30m, turn **L** on footpath signed to church. Follow with stream on **R** and, after a footbridge, continue along grassy path. Follow across a track, then 30m beyond bear **R** to a squeeze and stone stile. Follow enclosed path to gate. Continue straight ahead to reach road at Merriott. (Turn **L** here to visit church).

Start here for Section 2 (Merriott to Ham Hill) and Section 3 (Merriott to Langport via the western link route)

Please follow the Countryside Code. Your guide to enjoying parks and waterways, coast and countryside. Respect everyone. Protect the environment. Enjoy the outdoors.

The River Parrett Trail

Section 2: Merriott to Ham Hill

Overview

From Merriott the route is fairly level through fields to Lower Stratton, Wigborough and the approach to Norton sub Hamdon at Coleford Bridge. The route then climbs gradually to Norton sub Hamdon and Greenham's Cross.

It then takes a steep climb to the top of Ham Hill, with rewarding views across the Somerset countryside. The village of Norton sub Hamdon is worth exploring for its many fine buildings built from the local hamstone, including a visit to the church and the dovecote.

There may be livestock in fields, including on the summit of Ham Hill, so please keep dogs on a lead.

Length of Walk: 5.75 miles

OS Explorer Map: 129 Yeovil & Sherborne



Parking: Merriott Recreation Ground car park, roadside parking (please park sensibly) in Merriott and at the any of the Ham Hill Country Park car parks.



Travel and Transport: Visit www.travelsomerset.co.uk or www.travelinesw.com for help in planning your logistics.



Toilets: Toilets at the Ham Hill Country Park Rangers Office.



Places to Eat and Drink: Pubs in Merriott, Norton sub Hamdon and in Ham Hill Country Park. Shops and café in Merriott and Norton sub Hamdon.



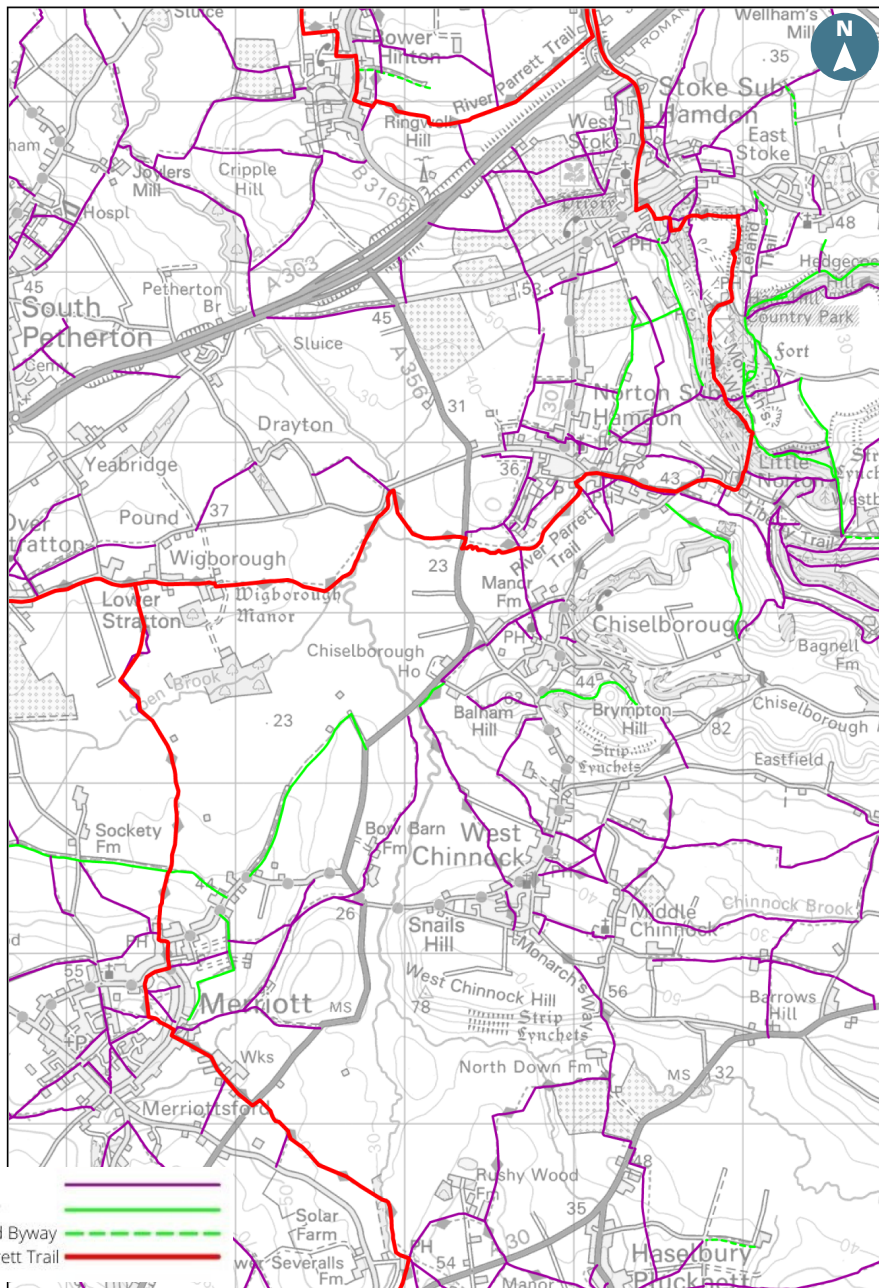
Look out for: The circular dovecote next to the church in Norton sub Hamdon that is the oldest building in the village. Admire the craftsmanship in many of the buildings along the walk, practically every building in the area is made from the hamstone quarried locally.



While in the Area: Explore Ham Hill Country Park, site of the largest Iron Age hill fort in the country. There are superb views of the Levels, Exmoor and the Mendip Hills and a striking war memorial, which can be seen from miles around.

The River Parrett Trail

SECTION 2: Merriott to Ham Hill



This map is based upon Ordnance Survey material with the permission of Ordnance Survey on behalf of the Controller of Her Majesty's Stationery Office © Crown copyright. Unauthorised reproduction infringes Crown copyright and may lead to prosecution or civil proceedings. (Ordnance Survey Crown Copyright 2003)

Disclaimer - The Public Rights of Way shown on the map are only intended as an indication of the general route. To determine the exact route of a Public Right of Way, the Definitive Map (1:10560 scale) should be consulted.



The River Parrett Trail

Section 2: Merriott to Ham Hill (page 1)

1. ST 445 128 MERRIOTT (from Section 1)

Turn **R** on road and pass pub on **L**. Turn **L** at T junction into Higher Street. Where road bends **R** turn **L** on track and then footpath signed to Garstone Lane. Where this enclosed path bends **R**, turn **R**, ignoring stile ahead of you.

At kissing gate continue on **R** hand edge of next two fields and then across the middle of next large field to reach kissing gate at Garstone Lane.

2. ST 446 135

Cross track, go through kissing gate opposite and follow **L** hand edge of next four fields. In fifth field go across middle of field, aiming for gate to **R** of large tree. Go through gate, cross stream and continue straight ahead to gap in hedge opposite. Keep to **L** hand edge of next field and on reaching end of trees on **L**, bear diagonally **R** across a grassy strip to a fingerpost.

Go to **R** of post and continue on **L** hand edge of next field which finally bends round to **R** to reach footbridge on **L**. Cross bridge and go straight ahead on path aiming for large hedgerow and then turn **L**, keeping hedge on **R** to reach kissing gate in top **R** hand corner. Cross and keep along **R** hand edge of field to reach road at Lower Stratton.

3. ST 444 152 LOWER STRATTON

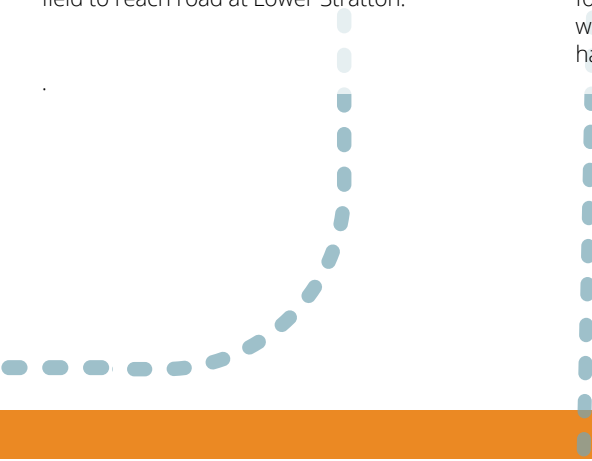
From gate head east on road. After 150m at junction keep ahead (No Through Road) signed to Wigborough. Continue 250m and go through gate and pass Wigborough Manor on **R**. At end of high walls bear round to **R** and then **L** on waymarked path straight ahead across grassy field.

At brow of hill continue downhill towards hedge gap but go **L** before it to (often muddy) gate in corner. Cross gate and follow **L** hand edge of field for 500m to reach a kissing gate on **L** at road. Go **R** to reach Creedy Bridge over River Parrett.

4. ST 459 157 CREEDY BRIDGE

Immediately past the bridge turn **R** on footpath through metal squeeze gate. Bear **L** across field to squeeze gate in far **L** hand corner.

Go through and follow **R** hand edge of next field to kissing gate at the busy A356. Cross road with care to layby opposite, turn **L** for 10m and then turn **R** through gate onto footpath. Immediately turn sharp **R** along **R** hand side of field for 70m to reach stream and turn **L** to follow with stream on **R**. Continue to follow stream on **R**, ignoring two footbridges on your **R**. Eventually reach and cross a footbridge ahead of you and follow obvious path with stream now on **L** to reach road at Norton sub hamdon.



The River Parrett Trail

Section 2: Merriott to Ham Hill (page 2)

5. ST 470 158 NORTON SUB HAMDON

Turn **R** for 80m to reach main road through village. Turn **R** along road for 550m passing pub on **L** and keeping to the raised path on **R**. Where road bends **R**, turn **L** into Greenham Cross, signed to Little Norton.

6. ST 478 158 LITTLE NORTON

Pass through Little Norton with mill on **R** then go **L** up road signed to Ham Hill. After 150m turn **R** up steps on footpath signed to Ham Hill and walk up steep path through bracken to reach crossing track. Continue ahead for 30m then turn **L** on broader track. Ignore gate on **R** and at crossroads of tracks go ahead on main path climbing gradually to reach parking area and information board. Keep to **L** of car park and take narrow undulating path to **L**, ignoring any down hill paths to **L**, to reach road at Ham Hill. Turn **L** and in 100m reach layby on **L** with stunning views and information boards.

7. ST 478 167 HAM HILL

At far end of layby cross road and turn **R** down steps to reach a picnic area. Cross picnic area to reach a tarmac road. (Toilets on **L** here). Turn **R** to reach pub on **L**. Bear **L** round the pub and go through pub car park to reach a gate opposite. Go through gate (excellent views out to **R** here) and follow main surfaced track, passing Ham Hill's version of Stonehenge on your **L** to reach the Memorial.

Start here for Section 4 (Ham Hill to Langport via Western Link route)

**Please follow the Countryside Code.
Your guide to enjoying parks and
waterways, coast and countryside.
Respect everyone.
Protect the environment.
Enjoy the outdoors.**

The River Parrett Trail

Section 3 : Merriott to Langport via Western Link

Overview

This route follows the west link via South Petherton and is a shorter route to East Lambrook than the east route over Ham Hill. From Merriott the route is fairly level crossing fields to Lower Stratton. It then follows mainly minor roads to South Petherton and across meadows to East Lambrook where it re-joins the east route shortly after passing East Lambrook. The route then continues via Kingsbury Episcopi and Muchelney in to Langport. The latter part of the route runs alongside the Parrett.

Some sections of the riverside walk can become very muddy after wet weather. The section from Westover Bridge to Langport is particularly prone to mud.



Length of Walk: 6.25 miles

OS Explorer Map: 129 Yeovil & Sherborne



Parking: Roadside parking in Merriott and car parks in South Petherton, Kingsbury Episcopi and Langport.



Travel and Transport: Visit www.travelsomerset.co.uk or www.travelinesw.com for help in planning your logistics.



Toilets: Public toilets in South Petherton.



Places to Eat and Drink: Pubs in Merriott, Over Stratton, South Petherton, East Lambrook, and Langport. Shops, restaurants, and café in South Petherton and Langport. Village shop and café in Kingsbury Episcopi.



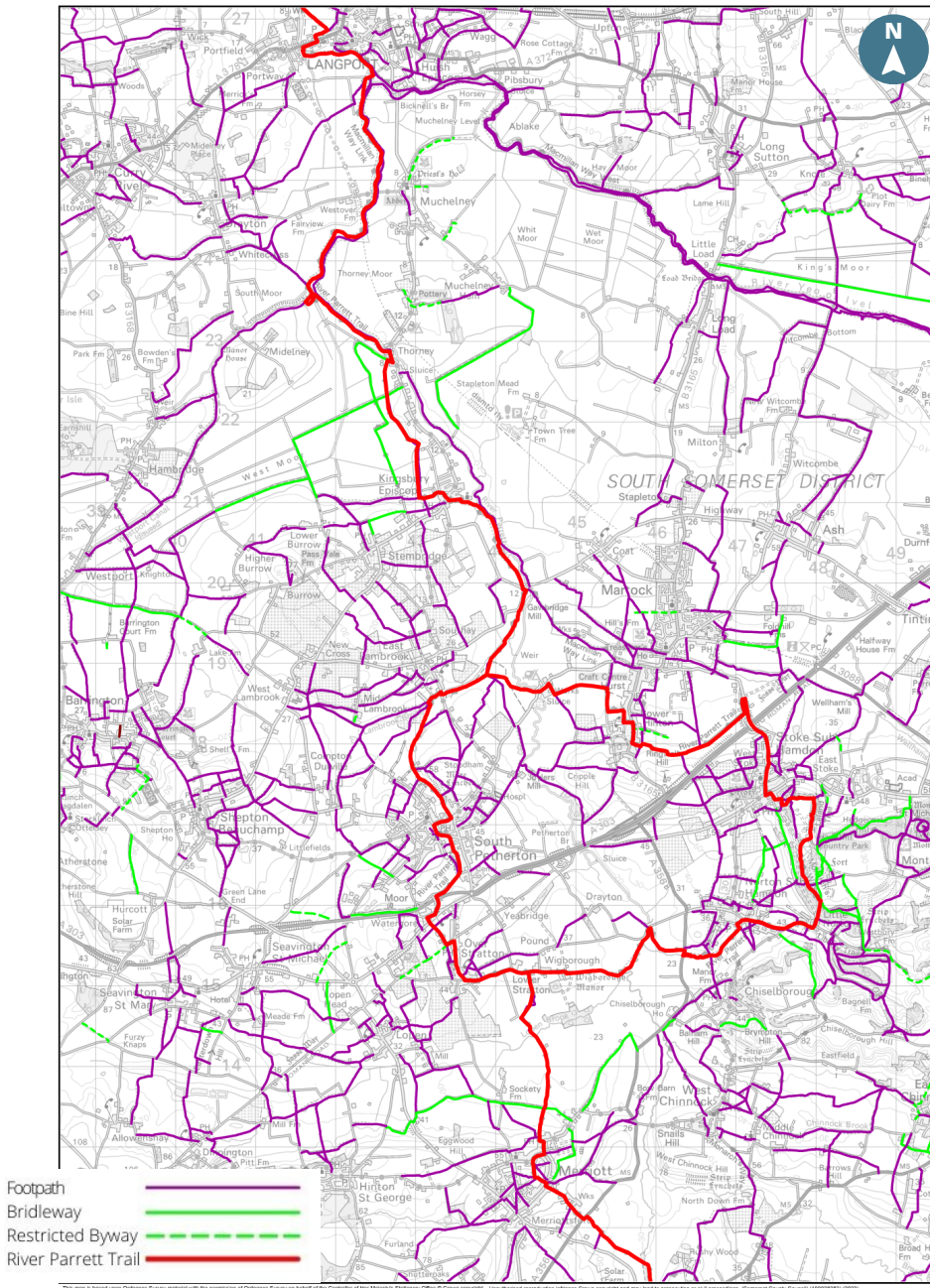
Look out for: Majestic polo horses in the fields of the attractive Wigbrough Manor built in 1585. Chukkas, matches and training sessions can be watched from the footpath through the property. Brightly coloured kingfishers regularly dart along the river and cuckoos have been heard around Gawbridge Mill.



While in the Area: East Lambrook Manor gardens, famous for snowdrops in February but an attractive garden all year around. Montacute House and Barrington Court are both National Trust properties and very popular with the visitors. Thorney Mill is not on the trail itself but once used the water of the Parrett to grind corn.

The River Parrett Trail

SECTION 3: Merriott to Langport



This map is based upon Ordnance Survey material with the permission of Ordnance Survey on behalf of the Controller of Her Majesty's Stationary Office © Crown copyright. Unauthorised reproduction infringes Crown copyright and may lead to prosecution or civil proceedings. (Somerset County Council) (10003982) (2020)

Disclaimer - The Public Rights of Way shown on the map are only intended as an indication of the general route. To determine the exact route of a Public Right of Way, the Definitive Map (1:10560 scale) should be consulted.

The River Parrett Trail

Section 3 : Merriott to Langport via Western Link (page 1)

1. ST 445 128 MERRIOTT (from Section 1)

Turn **R** on road and pass pub on **L**. Turn **L** at T junction into Higher Street. Where road bends **R** turn **L** on track and then footpath signed to Garstone Lane. Where this enclosed path bends **R**, turn **R**, ignoring stile ahead of you. At next stile continue on **R** hand edge of next two fields and then across the middle of next large field to reach kissing gate at Garstone Lane.

2. ST 446 135

Cross track, go through kissing gate opposite and follow **L** hand edge of next four fields. In fifth field go across middle of field, aiming for gate to **R** of large tree. Go through gate, cross stream and continue straight ahead to gap in hedge opposite. Keep to **L** hand edge of next field and on reaching end of trees on **L**, bear diagonally **R** across a grassy strip to a fingerpost. Go to **R** of post and continue on **L** hand edge of next field which finally bends round to **R** to reach footbridge on **L**. Cross bridge go straight ahead on path aiming for large hedgerow and then turn **L**, keeping hedge on **R** to reach stile in top **R** hand corner. Cross and keep along **R** hand edge of field to reach road at Lower Stratton.

3. ST 444 152 LOWER STRATTON

Turn **L** along road. At junction turn **L** and continue along road into Over Stratton. At next junction turn **R** on road signed to South Petherton. Walk past pub and after 150 yds turn **L** down Fosse Lane. At end of lane turn **R** into Northfield Lane, signed Watgore. Follow track to its end at a road.

4. ST 432 158

Cross road with care to track opposite. At T junction turn **R** on road and then at crossroads turn **L** on road crossing A303.

This bends **L** and then **R** signed to South Petherton. Keep on this road which becomes South Street in to South Petherton.

5. ST 434 169 SOUTH PETHERTON

Turn **L** downhill on Knapp Hill and bear **L** uphill on St James's Street through town. Pass Market Square on **L** and continue straight ahead until reaching Silver Street. Turn **R** and follow road to T junction. Bear **L** uphill and after 80 yds turn **L** on footpath signed to East Lambrook. Go past Woodland Trust site on **L**. Pass through two metal gates and continue straight on. Over stile, through gate and proceed with fence on **R**. Ignore stile and bridge on **L**. Continue straight over private drive and carry on with stream on **L**. Go through stone squeeze stile, over two bridges and stile, and follow **L** hand edge of field. At metal footbridge cross and follow short enclosed section to reach road. Turn **R** and follow Water Street to end, ignoring Church Lane on **L**.

6. ST 433 186 EAST LAMBROOK

At T junction turn **R**, cross bridge and turn immediately **L**. Go through two kissing gates and keep stream on your **L**. In the middle of the second field bear **R** towards kissing gate. This is where the East Link via Ham Hill joins. Do not pass through the kissing gate but bear **L** back towards the stream. Walk with stream on **L**. At metal footbridge on **L**, cross and turn **R** heading for tall trees ahead. Pass through two kissing gates to reach road.

7. ST 443 196 GAWBRIDGE MILL

Turn **R**, go past the mill, and follow the road. Before the road bridge crosses the river, turn **L** following the road for approx. 50m, before passing through a kissing gate and out onto the bank of the Parrett.

The River Parrett Trail

Section 3 : Merriott to Langport via Western Link (page 2)

8. ST 443 196 GAWBRIDGE MILL cont.

Follow the riverbank until you cross a bridge. After crossing the bridge, turn slightly **L** and head for the gate in the treeline on the far side of the large field. Pass through the gate, over a bridge and come out onto the road.

9. ST 435 210 KINGSBURY EPISCOPI

Turn **L** and walk along road to reach T junction. Turn **R** along road to reach village green with its octagonal lock up. Turn **L**, going straight on at next two junctions. Just after second junction (road called West End) bear **L** between houses. Follow enclosed path to reach a kissing gate and footpath sign to Thorney Bridge. Follow path, cross stile and then turn **R**, signed to Thorney.

10. ST 431 211

Walk across the fields to a bridge and continue ahead across fields, through gates. After crossing the third bridge, keep the stream on your **R**. Continue on **R** hand edge of fields until reaching fingerpost at a crossing track.

11. ST 426 224

Continue straight ahead signed to Thorney. Keep along **R** hand edge of fields with brook on **R** until reaching a wooden footbridge onto a track with fingerpost. Turn **R** on track signed to Thorney Bridge. On reaching road turn **L** and walk to road bridge across River Parrett.

12. ST 427 229 THORNEY BRIDGE

Just before road bridge turn **L** on footpath signed to Westover Bridge. Walk along bank of River

Parrett for one mile, passing through several gates, to reach Muchelney Pumping Station on your left, where several waterways meet.

13. ST 418 236 MULCHELNEY PUMPING STATION

Bear round to **L**, cross bridge and pass to **R** of Pumping Station. Pass a group of trees, turn **R** to cross bridge and turn **R** again to pass Pumping Station on your **R** to reach a metal gate. Go through and continue along bank of River Parrett for 1.2 miles, passing through several metal gates, heading towards Muchelney church, ahead to reach road at Westover Bridge.

14. ST 425 248 WESTOVER BRIDGE, MUCHELNEY

Go straight across road and continue on **L** hand bank of river signed to Huish Bridge, passing through several metal gates. At a point where there is a wooden kissing gate on the river bank, ignore this and continue straight ahead through waymarked metal gates slightly away from the river but with a ditch on your **R**. After passing through two gates in quick succession turn **R** on track and cross Huish Bridge across River Parrett. Immediately after crossing bridge turn **L** keeping the River Parrett on **L** and ditch on **R**. Follow the river bank for 400 yds, ignoring footbridges on **R**. Continue straight on along river bank, passing picnic area. Do not cross the river and turn **R** along Bow Street.

Start here for Section 5 (Langport to Bridgwater)

Please follow the Countryside Code. Your guide to enjoying parks and waterways, coast and countryside. Respect everyone. Protect the environment. Enjoy the outdoors.

The River Parrett Trail

Section 4: Ham Hill to Langport

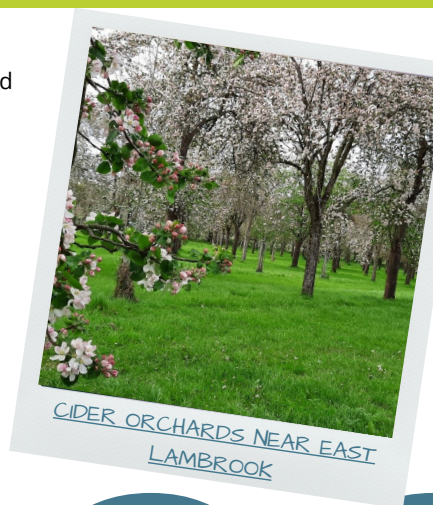
Overview

A steep descent from Ham Hill to Stoke sub hamdon followed by a level walk mainly across meadows and fields to Bower Hinton, Kingsbury Episcopi and then onto Thorney Bridge. Thereafter the route follows the grassy bank of the River Parrett to Langport.

There may be livestock in fields, please keep dogs on leads. Some sections of the riverside walk can become very muddy after wet weather particularly between Weston Bridge and Langport.

Length of Walk: 10.75 miles

OS Explorer Map: 129 Yeovil & Sherborne



CIDER ORCHARDS NEAR EAST LAMBROOK



Parking: Ham Hill Country Park, Kingsbury Episcopi Community Centre and a good selection of free carparks in Langport, including long stay.



Travel and Transport: Visit www.travelsomerset.co.uk or www.travelinesw.com for help in planning your logistics.



Toilets: Public toilets available at Ham Hill Country Park and in Langport beside the library.



Places to Eat and Drink: Pubs on Ham Hill and in Stoke sub hamdon, Bower Hinton and Langport. Café in Bower Hinton, village shop and café in Kingsbury Episcopi, and selection of cafés, restaurants and shops in Langport.

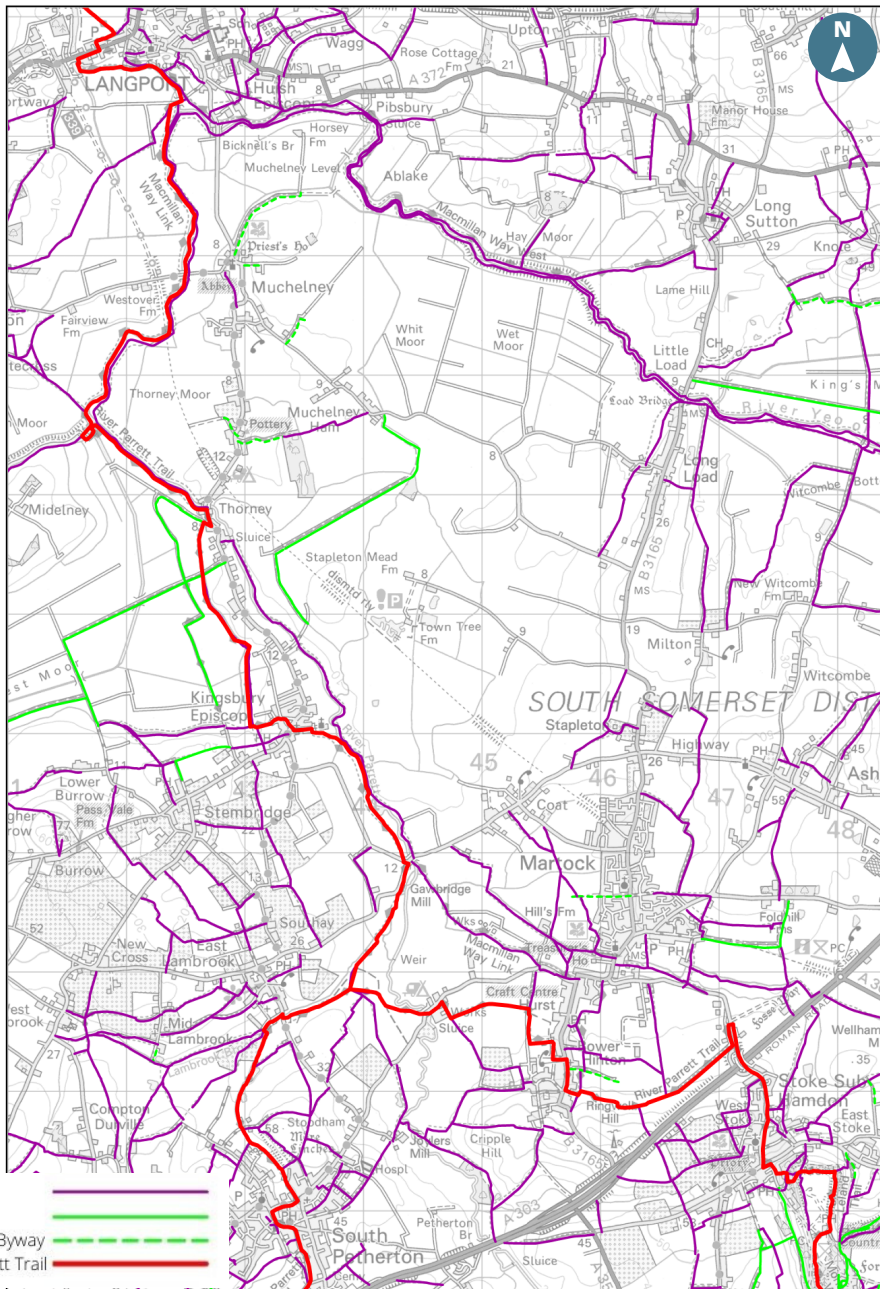


Look out for: Productive orchards laden with pale pink blossom in the spring and fruits in the autumn, ready for harvesting and making into Somerset Cider. Colourful willows grown in Withy beds ready for hand crafting into coffins, hot air balloon baskets and domestic and garden products.



While in the Area: Visit the majestic Benedictine Muchelney Abbey (English Heritage), complete with Tudor monks' quarters. The John Leach Muchelney Pottery is close and allow time to explore Langport with an interesting selection of galleries, gift shops and independent cafes.

SECTION 4: Ham Hil to Langport



This map is based upon Ordnance Survey material with the permission of Ordnance Survey on behalf of the Controller of Her Majesty's Stationery Office © Crown copyright. No theoretical representation of the Ordnance Survey and may lead to misinterpretation or other consequences. (Ordnance Survey, 2009)

Disclaimer - The Public Rights of Way shown on the map are only intended as an indication of the general route. To determine the exact route of a Public Right of Way, the Definitive Map (1:10560 scale) should be consulted.

The River Parrett Trail

Section 4: Ham Hill to Langport (page 1)

1. ST 477 173 HAM HILL MEMORIAL (from Section 2)

Go to **R** of memorial and bear **L** down slope passing seat on **R**. Continue steeply downhill on well trodden path (with Stoke sub hamdon to **R**) to reach a gate. Go through and then turn **R** to reach a grassy path with fence on **R**. At junction of paths turn **L** on steps downhill to reach a road, then **R** on road downhill to reach main road through Stoke Sub Hamdon.

2. ST 474 174 STOKE SUB HAMDON

Turn **L** into village and then next **R** into North St, signed to Martock. Walk along road with care for 0.7 miles to cross over main A303 dual carriageway. After 130m, ignore the A303 sliproad signed to Andover, but 200m beyond turn **L** on road and after 20m turn **L**, SP Bower Hinton. Continue on tarmac road through metal kissing gate onto a track after last house on **R**. Turn **R** on track signed to Bower Hinton. After 600m track reaches a gate. Continue ahead and keep to **R** hand edge of field, ignoring stile on **R**, to reach gateway. Continue on **L** hand edge of next field and on reaching far end bear **R** to kissing gates in corner. Continue on **R** hand edge of next two fields. At end of second field path bears **L** then turns **R** along an enclosed path to reach road at Bower Hinton.

3. ST 457 180 BOWER HINTON

Turn **R** on road and follow for 400m. Pass church on **R** and 50m beyond go **L** on narrow lane which soon becomes a rough track. Follow this as it bears **R** and then bends **L** to reach a fingerpost signed Parrett Trail.

Turn **L** through allotments and walk along **L** hand edge of field. At corner turn **R** and follow **L** hand edge of field. In far corner cross bridge to meet a farm track. Turn **R** for 100m to next gate on **L**. Go through and walk along **R** hand edge of next two fields aiming for the distinctive chimney of Parrett Works. Cross bridge and walk along **L** hand edge of next field to kissing gate in **L** hand corner. Pass through and follow narrow path to next gate and then turn **R** with wall on **L** to reach a gate onto road. Turn **L** on road for 150m to reach bridge over River Parrett.

4. ST 446 187 PARRETT WORKS

Immediately past the bridge turn **R** on footpath keeping to **R** hand edge of field with river on **R**. On reaching last large bend in river, bear **L** to kissing gate in hedge line. Turn **R** along Drove and then at open field turn **L** across middle of field aiming for a stile in the corner of the hedgerows. On reaching stile, do not cross but bear **R** with hedge on **L** to reach a kissing gate in far **L** hand corner.

5. ST 443 196 GAWBRIDGE MILL

Turn right, go past the mill, and follow the road. Before the road bridge crosses the river, turn **L** following the road for approx. 50m, before passing through a kissing gate and out onto the bank of the Parrett. Follow the riverbank until you cross a bridge. After crossing the bridge, turn slightly **L** and head for the gate in the treeline on the far side of the large field. Pass through the gate, over a bridge and come out onto the road.

The River Parrett Trail

Section 4: Ham Hill to Langport (page 2)

6. ST 435 210 KINGSBURY EPISCOPI

Turn **L** and walk along road to reach T junction. Turn **R** along road to reach village green with its octagonal lock up. Turn **L**, going straight on at next two junctions. Just after second junction (road called West End) bear **L** between houses. Follow enclosed path to reach a kissing gate and footpath sign to Thorney Bridge. Follow path, cross stile and then turn **R**, signed to Thorney.

7. ST 431 211

Walk across the fields to a bridge and continue ahead across fields, through gates. After crossing the third bridge, keep the stream on your **R**. Continue on **R** hand edge of fields until reaching fingerpost at a crossing track.

8. ST 426 224

Continue straight ahead signed to Thorney. Keep along **R** hand edge of fields with brook on **R** until reaching a wooden footbridge onto a track with fingerpost. Turn **R** on track signed to Thorney Bridge. On reaching road turn **L** and walk to road bridge across River Parrett.

9. ST 427 229 THORNEY BRIDGE

Just before road bridge turn **L** on footpath signed to Westover Bridge. Walk along bank of River Parrett for one mile, passing through several gates, to reach Muchelney Pumping Station on your **L**, where several waterways meet.

10. ST 418 236 MULCHELNEY PUMPING STATION

Bear round to **L**, cross bridge and pass to **R** of Pumping Station. Pass a group of trees, turn **R** to cross bridge and turn **R** again to pass Pumping Station on your **R** to reach a metal gate. Go through and continue along bank of River Parrett for 1.2 miles, passing through several metal gates, heading towards Muchelney church, ahead to reach road at Westover Bridge.

11. ST 425 248 WESTOVER BRIDGE, MUCHELNEY

Go straight across road and continue on **L** hand bank of river signed to Huish Bridge, passing through several metal gates. At a point where there is a wooden kissing gate on the river bank, ignore this and continue straight ahead through waymarked metal gates slightly away from the river but with a ditch on your **R**. After passing through two gates in quick succession turn **R** on track and cross Huish Bridge across River Parrett. Immediately after crossing bridge turn **L** keeping the River Parrett on **L** and ditch on **R**. Follow the river bank for 400 yds, ignoring footbridges on **R**. Continue straight on along river bank, passing picnic area. Do not cross the river and turn **R** along Bow Street.

Start here for Section 5 (Langport to Bridgwater)

Please follow the Countryside Code. Your guide to enjoying parks and waterways, coast and countryside. Respect everyone. Protect the environment. Enjoy the outdoors.



The River Parrett Trail

Section 5: Langport to Bridgwater

Overview

After a brief walk through Langport the route soon joins the grassy riverbank of the Parrett and then follows it to Moorland where it switches to the mainly firm towpath of the Bridgwater and Taunton Canal and follows it to Bridgwater.

This is a level walk throughout.

Length of Walk: 13.55 miles

OS Explorer Maps: 129 Yeovil & Sherborne and 140 Quantock Hills & Bridgwater



Parking: Westover Trading Estate and other car parks in Langport. Car park at the foot of Burrow Mump, a short walk from the Trail, and car parks in Bridgwater.



Travel and Transport: Visit www.travelsomerset.co.uk or www.travelinesw.com for help in planning your logistics.



Toilets: Public toilets in Langport and Blake Gardens, Bridgwater.



Places to Eat and Drink: Pubs in Langport, Burrowbridge, Moorland and Bridgwater. Independent shops and cafés in Langport. High street and independent shops, cafés and restaurants in Bridgwater.



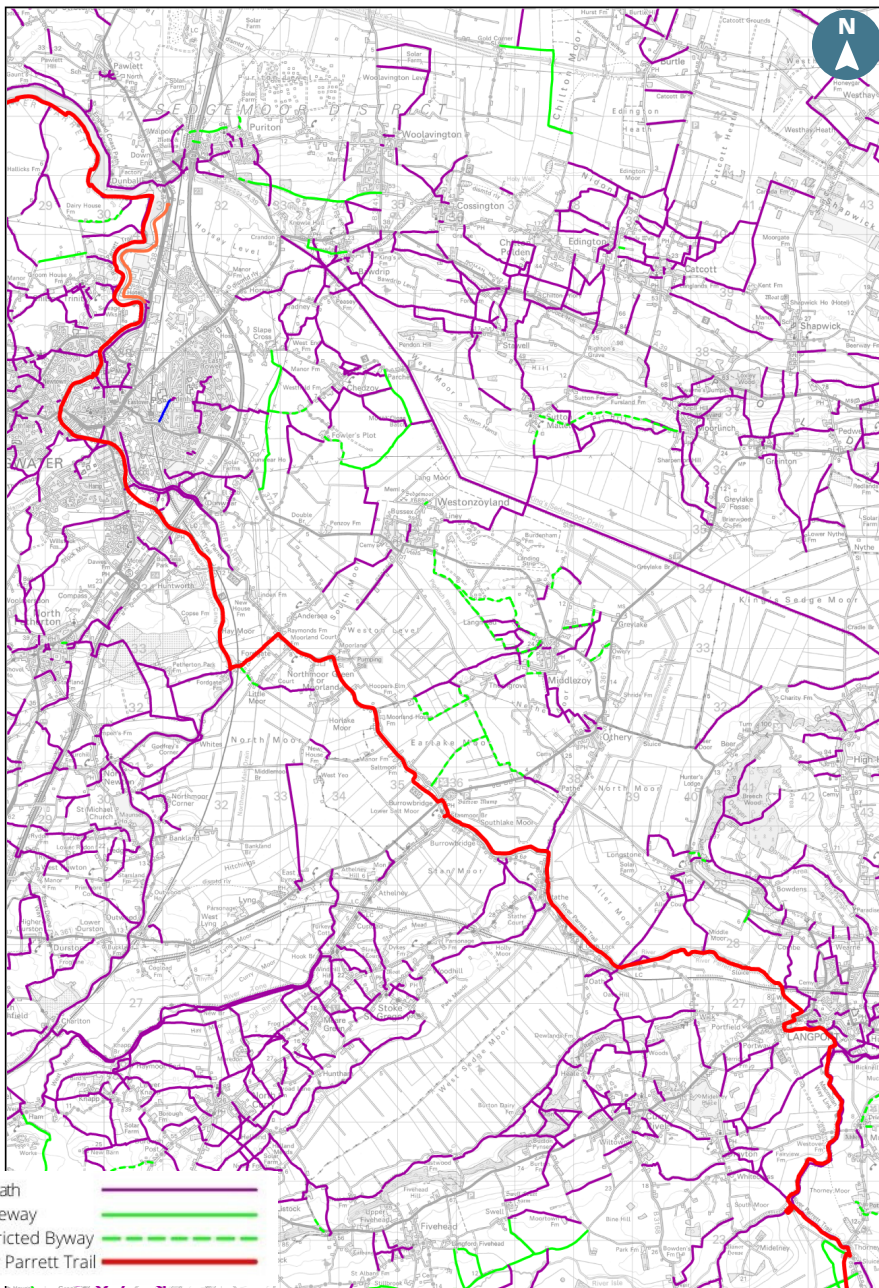
Look out for: The recently re-introduced cranes are a regular feature of the Somerset Levels. Barn owls hunt this section in the evening and early morning. Ditches, locally called rhynes are home to water voles and meadowsweet. Spot wading birds at nearby RSPB Greylake.



While in the Area: Climb Burrow Mump for extensive views across the Somerset Levels. Explore Bridgwater, especially the Blake Museum, and compare Brunel's railway bridge over the Parrett to the new 52m bridge by Colley Lane Industrial Estate. Westonzoyland is home to the Pumping Station Museum with a collection of stationary steam engines and pumps, many operating on the Steaming Days, and the village church for an exhibition about the Battle of Sedgemoor.

The River Parrett Trail

SECTION 5: Langport to Bridgwater



This map is based upon Ordnance Survey material with the permission of Ordnance Survey on behalf of the Controller of Her Majesty's Stationery Office. © Crown copyright. Unauthorised reproduction infringes Crown copyright and may lead to prosecution or civil proceedings. (Ordnance Survey Licence: 10003982/2020)

Disclaimer - The Public Rights of Way shown on the map are only intended as an indication of the general route. To determine the exact route of a Public Right of Way, the Definitive Map (1:10560 scale) should be consulted.

The River Parrett Trail

Section 5: Langport to Bridgwater

1. ST 419 267 LANGPORT (from Sections 3 & 4)

At main road turn **R** into Bow St. and walk along road for 200yds. Cross the road and in 100yds, turn **L** on footpath, go through gate at end and turn **R** along **R** hand edge of field at the back of houses. When you reach gate to Town Garden on **R**, turn **L** and go across middle of field to footbridge. Cross bridge and go straight ahead to reach riverbank and railway bridge.

2. ST 416 272

Go through kissing gate and under railway bridge to follow **R** hand bank of River Parrett, passing through several metal gates to reach Monk's Leaze Clyde. Cross the sluice bridge over the River Soway and keep to the high bank between the rivers.

3. ST 375 291 STATHE

Go past bridge and continue along **R** hand bank of river, signed River Parrett Trail, passing through metal gates. Follow permissive path sign to Burrowbridge, continuing to follow **R** hand bank for 1.5 miles until you reach road and pub on **R**.

4. ST 358 304 BURROWBRIDGE

Turn **L** on road, cross river and take first road on **R** signed to Moorland. Walk with care along road for one mile. After one mile when road bends **L** away from river keep ahead – signed “no through road” following **L** hand bank of river. Continue following footpath on **L** hand bank before reaching the distinctive chimney of Westonzoyland Pumping Station on opposite side of River.

5. ST 339 328 WESTONZOYLAND PUMPING STATION

After passing pumping station keep ahead and re-join the road after the second kissing gate. Continue along road and pass pub and cottages on **L** and turn immediately **L** on footpath with stream on **R**.

6. ST 329 332 MOORLAND

Continue straight along road, over railway until you reach the swing bridge across Bridgwater & Taunton Canal at Fordgate. Do not cross the bridge, instead turn **R** and walk along **R** hand towpath of canal for 1.5 miles to reach pub.

7. ST 353 350 BOAT & ANCHOR, HUNTWORTH

From pub continue past canal bridge on **R** hand towpath under M5 motorway. On reaching next bridge (Crossways Swing-bridge) cross track and follow **L** hand towpath to Bridgwater Docks/Marina, approximately 2 miles. **Update** Summer 2023 - A section of the tow path may be closed due to repairs, please follow the diversion in place.

8. ST 299 365 BRIDGWATER DOCKS/MARINA

Continue down towpath to the Bridgwater Docks. Walk along the **L** hand side of quay and on reaching far end bear round to **R** and then **L** to meet road. Turn **L** down this road (Russell Place) and then immediately cross road and take path on **R**, with small canal basin on **R**. Continue to reach bank of River Parrett where it meets the Docks entrance.

Start here for Section 6 (Bridgwater to Stert Point)

Please follow the Countryside Code. Your guide to enjoying parks and waterways, coast and countryside. Respect everyone. Protect the environment. Enjoy the outdoors.

The River Parrett Trail

SECTION 6: Bridgwater to Stert Point

Overview

Leaving Bridgwater Docks and following the banks of the Parrett which does some big meanders, on its way to Combwich. This is an easy section to follow as the path follows the top of the riverbank all the way to the outskirts of Combwich. After passing through the village of Combwich the route continues to follow the river bank. On reaching Steart Marshes Nature Reserve, the route follows the boundary bank to the community of Steart and to the bird hide tower at Steart Point.

Please follow local signage at Steart Point, areas may be closed to protect nesting birds or fragile habitats.



Length of Walk: 11.5 miles

OS Explorer Map: 140 Quantock Hills & Bridgwater



Parking: Street parking in Russell Place and other car parks in Bridgwater. Roadside parking in Combwich, please park considerably. Car parks at Steart Marshes Nature Reserve and at the start of the Somerset Coast Path at Steart.



Travel and Transport: Visit www.travelsomerset.co.uk or www.travelinesw.com for help in planning your logistics.



Toilets: Blake Gardens, Bridgwater and the main Steart Marshes Nature Reserve car park.



Places to Eat and Drink: Pubs and shops in Combwich and Cannington. High street and independent restaurants, pubs, cafés and shops in Bridgwater.

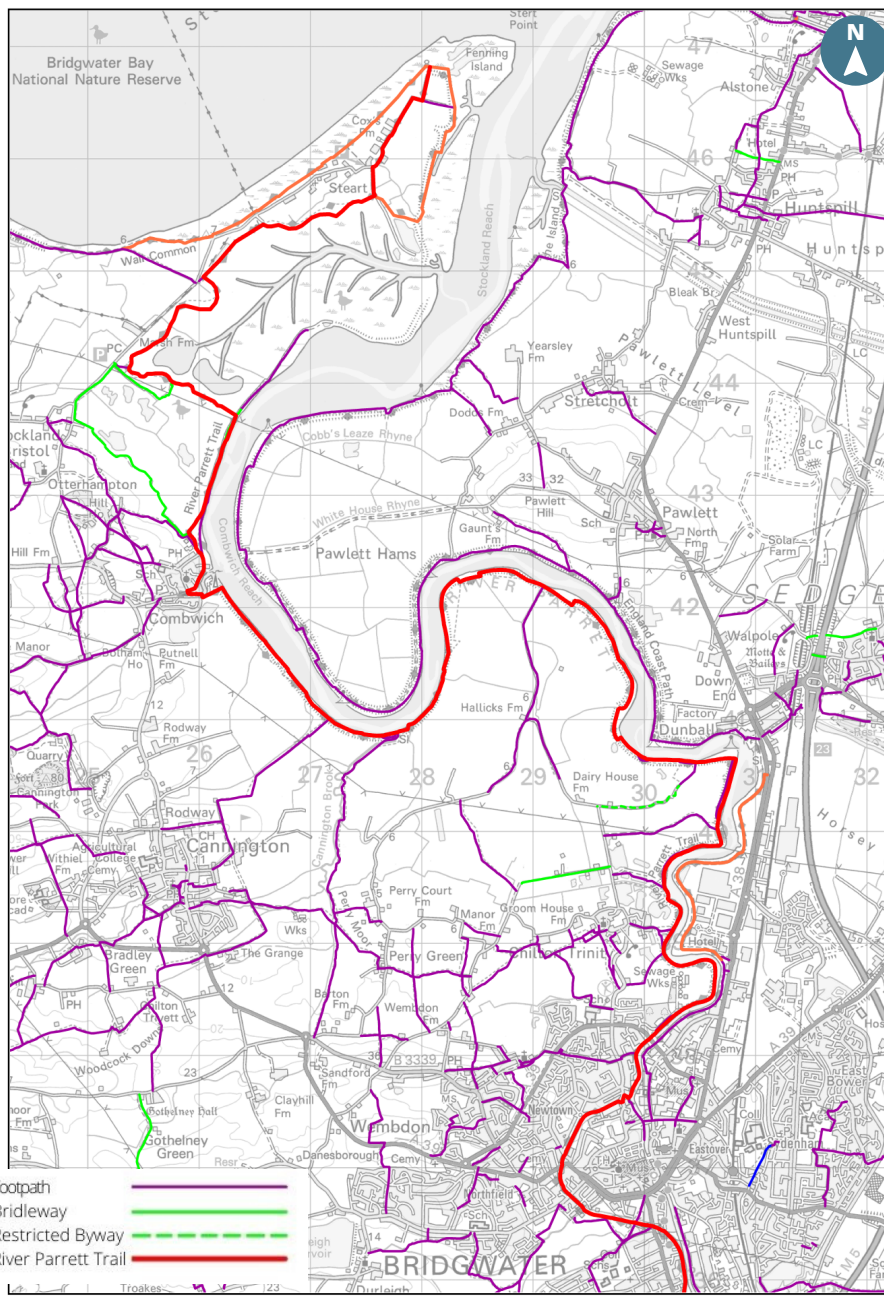


Look out for: Wildlife thrive at Steart Marshes and Bridgwater Bay including breeding avocets, curlew, oystercatcher, lapwing, little ringed plover and 18 species of dragonflies and damselflies. Birds of prey, including merlin, peregrine, kestrel, buzzards and marsh harrier are regularly spotted. Catch the tidal bore and marvel at the mud sculptures and patterns left by the tide.



While in the Area: Visit the Walled Gardens of Cannington for interesting gardens, tea room and plant sales. Combwich, site of an ancient ferry crossing and a busy port from the 15th century - historically, timber, brick and coal and more recently equipment for Hinkley Point C Nuclear Power Station.

SECTION 6: Bridgwater to Stert Point



Disclaimer - The Public Rights of Way shown on the map are only intended as an indication of the general route. To determine the exact route of a Public Right of Way, the Definitive Map (1:10560 scale) should be consulted.

The River Parrett Trail

SECTION 6: Bridgwater to Stert Point

1. ST 299 365 BRIDGWATER (from Section 5)

Follow **L** hand bank of River Parrett. Pass under main road and continue ahead on grassy bank. From this point, you are also following the England Coast Path (ECP). Continue walking atop the grassy bund. When the river turns **L**, you are opposite Dunball Wharf.

2. ST 308 407 DUNBALL WHARF

Continue on grassy bank through gates and kissing gates with views to the right of the village of Pawlett. Pass through further kissing gates, metal gates and past the water management system features at Pippin's Clyde, Fenlyn's Clyde and Stallington's Clyde.

3. ST 278 409 STALLINGTON'S CLYCE

Continue along **L** hand bank of river northwards for 1.5 miles through metal gates (views of Comwich and its church spire ahead). On reaching end of river bank path turn **L**.

4. ST 262 421

Go along a narrow path, straight ahead across tarmac road and keep ahead on narrow path. Where this path ends turn **R** to reach road. Turn **L** on road to pass houses on **L** and just before reaching main road turn **R** on path crossing stream, passing through metal barriers to reach road. Turn sharp **R** down riverside with stream on **R**. Walk along road which bends left to reach a small mooring area for boats.

5. ST 260 425 COMBWITH HARBOUR

Continue on road passing pub on **L**. Where road bends **L** continue straight ahead on firm track which bends **R** to rejoin **L** hand bank of river. After around 300yds turn **L** onto the new path along the boundary of the Steart Marshes Nature Reserve. Continue to follow the surfaced paths with signposts on or adjacent to the reserve bank.

6. ST 263 437

At the end of the new bank turn **L**. Continuing along surfaced path keeping the inundation on the **R**. When you reach the signpost showing the ECP summer route, turn **L** to join road.

7. ST 275 459

Turn **R** and walk along road. After a sharp **R** on the road, you will reach a metal gate next to a large oak tree, turn **L** at the tree and follow the track to the next gate and then turn **L**, crossing the field, to the bird hide and the end of the trail.

Congratulations - if you have walked from Chedington you have completed The River Parrett Trail!

Please follow the Countryside Code. Your guide to enjoying parks and waterways, coast and countryside.

Respect everyone.

Protect the environment.

Enjoy the outdoors.



The River Parrett Trail

The
River
Parrett
Trail

from
Source
to Sea



Claim your trail treasure

Whether you walk one section or all six, remember to visit our South Somerset Visitor Information Centre to claim your River Parrett Trail golden medallion as your special memento!

(Subject to availability and collection only)

Find out more

More useful information about enjoying The River Parrett Trail and Somerset in general, can be accessed on our website www.VisitSouthSomerset.com

Report an issue




If you come across an issue on the trail, please report it on this website www.somerset.gov.uk/roads-and-transport/report-a-problem-with-a-public-right-of-way.

Love it and leave it loved

We encourage you to:

- Be a green visitor
- Do not disturb any livestock and leave all gates as you find them
- Do not disturb wild animals, birds or flowers
- Keep dogs under close control and take home dog waste
- Take your litter home and recycle it if possible
- Support local shops and other local services

Share your walk with us:
#RiverParrettTrail

-  VisitSouthSomerset
-  VisitSSomerset
-  visitsouthsomerset

Keep in touch:

-  www.visitsouthsomerset.com
-  VisitSS@Somerset.gov.uk
-  01935 829333
-  South Somerset Visitor Information Centre & Gift Shop, Cartgate Picnic Site, A303/A3088, Stoke sub Hamdon, Somerset, TA14 6RA



Scan me